

PORTSMOUTH TOWNSHIP

NEW CODE

SECTIONS

PAGE

001

Sec. 1, T13N, R5E.

1

SEE MAP OF NE 1/4 OF SW 1/4

002

2ND

Sec. 2, T13N, R5E.

3 thru 4

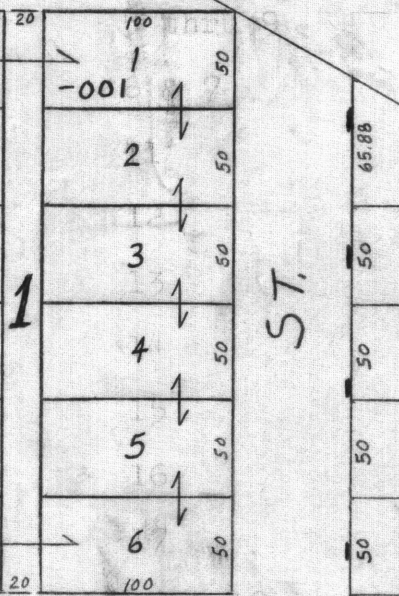
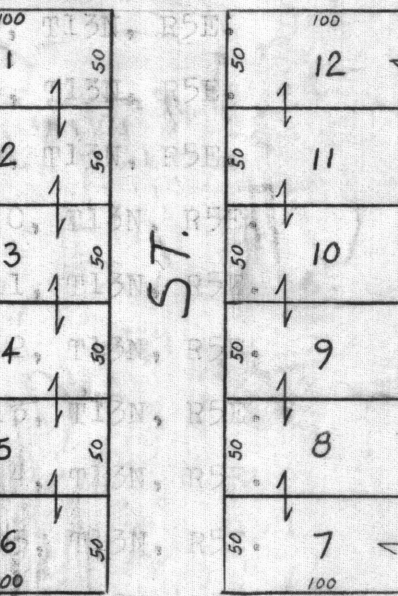
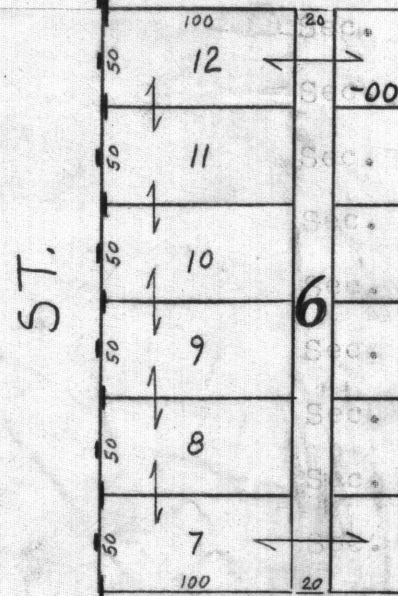
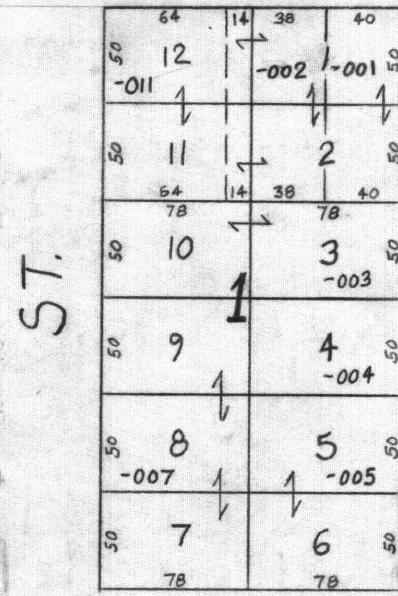
218.40

003

Sec. 3, T13N, R5E.

pt. 300-080-01

004



pt. 300-200-00

S 1/2 LN

84.84

124.36

1092.79

1092.79

377.48

197.85

ST.

ST.

ST.

ST.

005

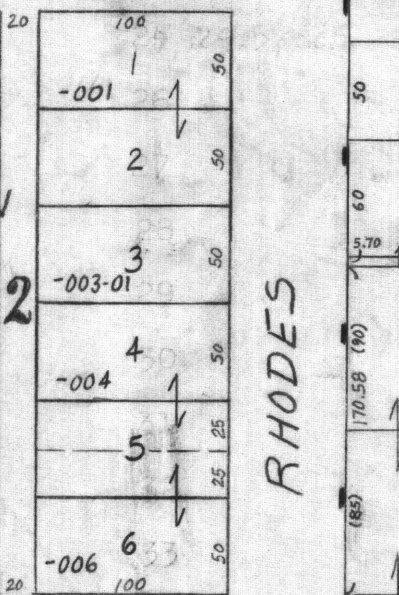
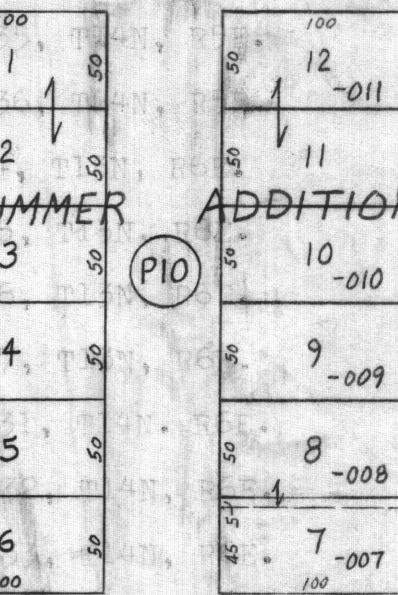
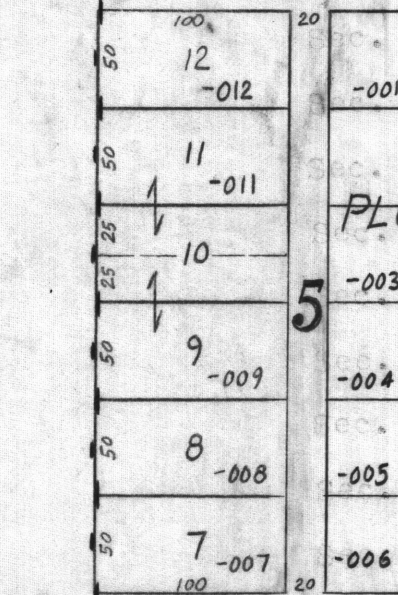
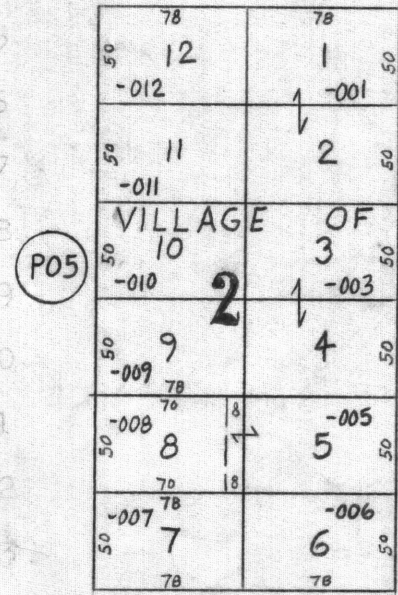
3RD

Sec. 4, T14N, R5E.

5 thru 6

300-070-01
1.09 Ac

006



300-020-00

300-010-00

873.16"

SEE MAP OF SW 1/4 OF SW 1/4

PO5

PO10

RHODES



1" = 100'

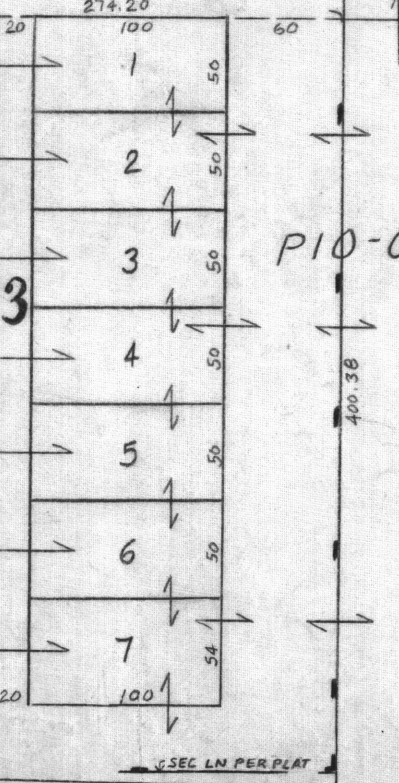
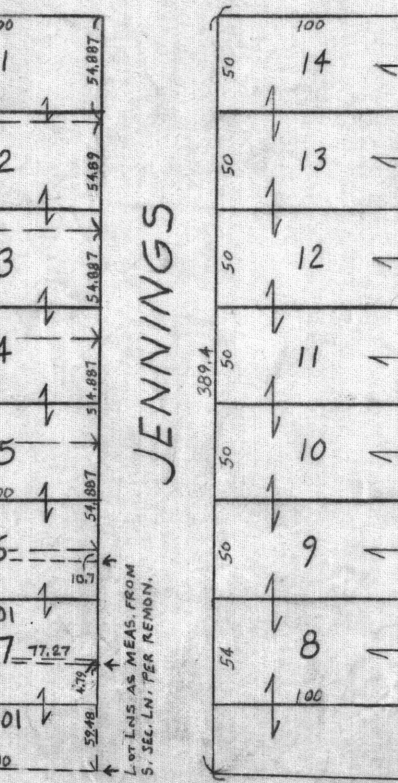
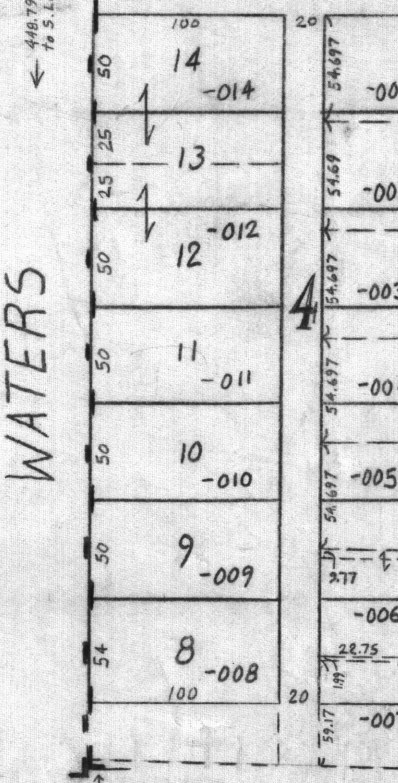
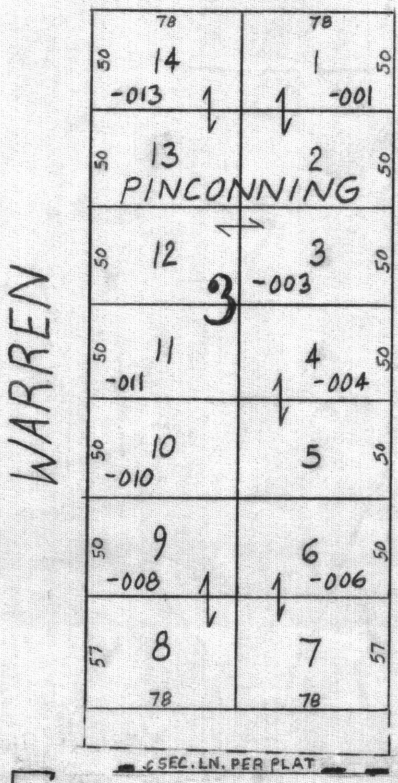
007

4TH

Sec. 5, T14N, R5E.

7 thru 8

008



PI0-003-001-00

SEE MAP OF SE 1/4

5TH

S. SEC. LINE

ST.

S 1/4 COR.

SE 1/4 OF SW 1/4 SECTION 23 T17N R4E

09-180-023-400-